

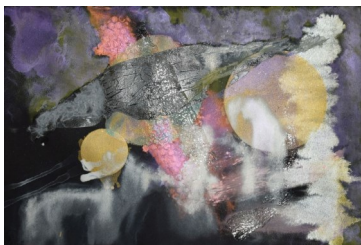
ARTIST STATEMENT

HOME WORK is work carried out mostly during 2020. A difficult year for artists as well as everyone else, not only were artists sad, but they were forced to function without the usual external stimuli needed to sustain creative momentum. For some months at home the view from the windows and the garden became a necessary replacement for the great outdoors and the city. Fortunately for me I live near the great River Derwent and have a studio to work in that looks out on Kunanyi, the Tasman bridge and the river. The forms and mediums of the work vary as I enjoy making art in all kinds of mediums. but the content is similar ie immersion within a landscape, relationships and abstract landscape. There are three simple palette knife oils of the view from the front window. There are three abstractions based on landforms, water and navigating through the landscape. There are three large watercolours from the deck. There are four mixed media works about being part of a family, there is one large abstract oil about the birth of Spring after the dark Winter and there is one work designed to lighten the soul. Each mini body of work is a continuation of previous exhibitions and while the show may look eclectic, it has its own locked in rationale (in my mind at any rate). Welcome to 2021.

Betty Nolan



New Life
71 x 53cm Mixed media on black Hahnmueller paper framed in gunmetal with art glass \$750



Parent and Child
71 x 53cm Mixed media on black Hahnmueller paper framed in gunmetal with art glass \$750



Embrace
71 x 53cm Mixed media on black Hahnmueller paper framed in gunmetal with art glass \$750



En Famille
71 x 53cm Mixed media on black Hahnmueller paper framed in gunmetal with art glass \$750

Nolan Gallery
Space 109
77 Salamanca Place
Hobart 7004
03 62233449 0438446785
Www.nolanart.com.au
Betty.nolan@bigpond.com

Nolan
GALLERY



HOME WORK

Fog and Lights on the Bridge
Watercolour



Betty Nolan



Mountains and Clouds
103 x 63.5 Oil on canvas
framed in Tasmanian Oak
\$1800



Derwent Drift
103 x 63.5 Oil on canvas
framed in Tasmanian Oak
\$1800



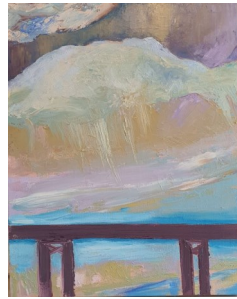
Bouyant
Oil on canvas (fr)
1860 x 125cm,
framed in white timber
6500



Eggy Float
104.5 x 104.5 cm
Oil on canvas framed in Tasmanian
oak. \$2300



View from the Window
51 x 40cm
Oil on canvas
\$795



Tasman Bridge
51 x 40cm
Oil on canvas
\$795



*Aurora
by Moonlight*
91 x 71cm
Full sheet watercolour
framed in matte silver with
art glass
1800



*Yellow Tasman
Bridge*
91 x 71cm
Full sheet
watercolour
framed in matte
silver with art glass
1800



*Where the Bee Sucks
There Suck I*

186 x 127 cm.

Oil on canvas in two
panels, framed in
white timber.

\$5500



*Fog and Lights on
Tasman Bridge*
91 x 71cm
Full sheet water-
colour framed in
matte silver with
art glass
1800