



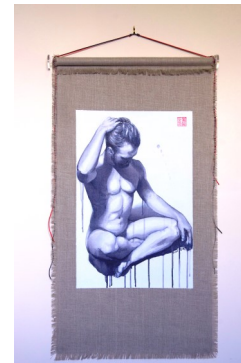
I



II



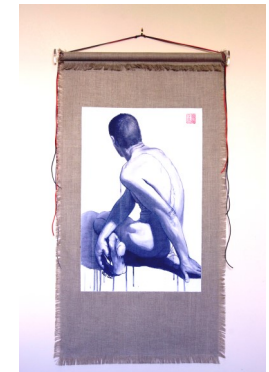
III



VII



VIII



IX

Line & Shadow I (线阴一) :160x91cm
Line & Shadow II (线阴二) :160x91cm
Line & Shadow III (线阴三) :160x91cm

\$3,500 ea

Line & Shadow IV (线阴四) :160x81cm
Line & Shadow V (线阴五) :163x81cm
Line & Shadow VI (线阴六) :160x81cm

\$3,450 ea

Line & Shadow VII (线阴七) :100x54cm
Line & Shadow VIII (线阴八) :100x54cm
Line & Shadow IX (线阴九) :100x54cm

\$1,900 ea

All works are on linen mounted onto Tasmanian Oak and Acrylic rods with silk cords.



IV



V



VI

VIVI OOI

This work is a combination of two conventions of art, that of the Chinese Sung dynasty hanging scroll and the European tradition of drawing from the nude posed model. In the same way, Vivi Ooi herself is a combination of her childhood in China and her life in Australia and Tasmania. Two cultures, two very different ways of being.

One of the constancies in this artist's life is the pleasure of life drawing. Many artists do this still, as a way of training the eye and arm and of relaxing. Vivi has always drawn, being a chronic artist from an early age and her *real* job (when art was out of the question) was as an occupational therapist. This gave her the anatomical knowledge to render with accuracy and understanding but the beauty she creates is all her own.

These hanging scrolls come from a tradition centuries old when mainly landscapes, but occasionally beautiful women or dignitaries, were painted in ink on hanging silk panels. The making of these panels is an ancient craft but Vivi Ooi aimed for a more contemporary look that contrasts evocative ink paintings with a border of ungessoed linen and suspends them from Tasmanian Oak rods with acrylic ends. The hanging cords are silken as is traditional and like other scrolls the works can be safely rolled for storage and transport.

She has titled this body of work *Line That Connects Us, Shadow That Gives Us Form*. She explains this as having two meanings. First, the figures combine the linearity of Chinese traditional painting with the form and volume of European traditional art integrating technique and subject matter in the depiction of the body.

Second, the characters Xian Yin

线 Xian - lines or connections

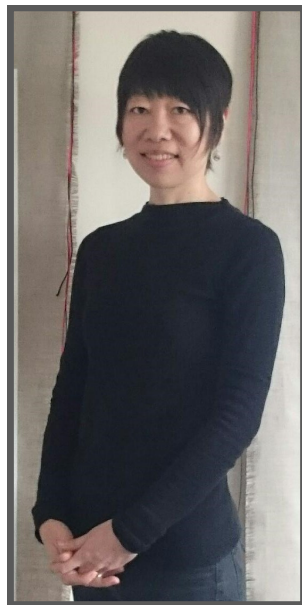
阴 Yin - dark or shadows

refer to the commonalities between us all (the body) and to the darkness that gives us form, (adversity that tempers).

Nolan Gallery
Space 109 Salamanca Arts Centre
(03)62233449 0438446785
E:betty@nolanart.com.au
I:www.nolanart.com.au



Nolan
GALLERY



*Line that connects us,
shadow that gives us form*

情始于线 形源于阴

VIVI
OOI

