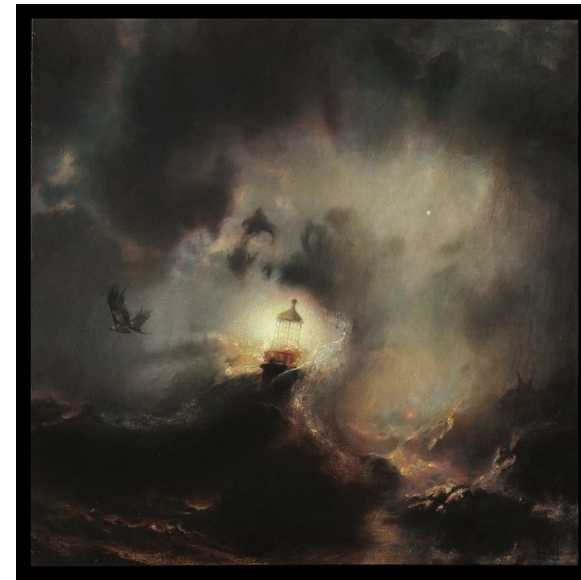




Light
75cm x 75cm
\$3600



All of Keith Lane's works in LIGHT are oil on canvas, framed.

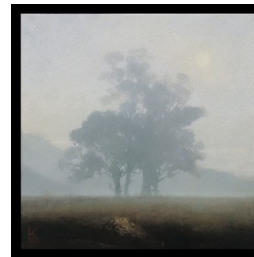
Deluge
75cm x 75cm
\$3600



Torr
60cm x 60cm
\$2400



Ravine
60cm x 60cm
\$2400



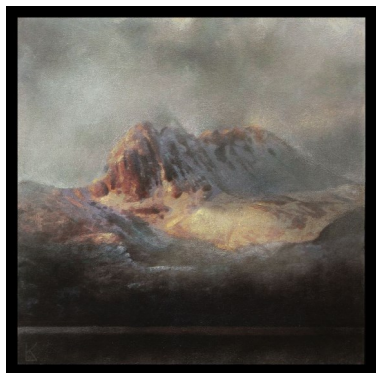
Morning Mist
40cm x 40cm
\$1200



Climb To The Summit
40cm x 40cm
\$1200



Deluge Study
40cm x 40cm
\$1200



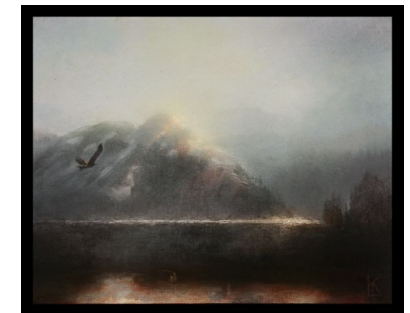
Cradle
60cm x 60cm
\$2400



Haze
60cm x 60cm
\$2400



Approaching The Interior
40cm x 50cm
\$1500



First Light
40cm x 50cm
\$1500



Signs of Life
75 x 75cm
\$3600

In this beautiful exhibition Tasmanian artist Keith Lane revisits the 19th century Romantics to explore today's zeitgeist. Painting around the Napoleonic wars Turner, Caspar David Friedrich and Australia's William Piguenit created extraordinary paintings to express how much greater Nature is than mere mortals.

At a time when there is war in Europe once more and the world is recovering from a pandemic the artist uses the Sublime Tasmanian landscape to suggest that where there is dark, there is also light.

The works are exquisitely rendered, and it is unsurprising that Lane was an architectural draughtsman in London, where he also trained in Fine Art.

Darkly mysterious shadows foreground the action and even in the fiercest tempest there is, however small, the suggestion of the dawn.

Betty Nolan

Nolan Gallery
Space 109, 77 Salamanca Place,
Battery Point 7004
(03) 62233449
0438446785
betty@nolanart.com.au
www.nolanart.com.au



March 2023
Nolan Gallery

Nolan
GALLERY

