



Nocte Luna XV
Oil on Canvas
60 x 40cm
Framed 45 x 65
\$1600

The d'Entrecasteaux Channel is the traditional home of Tasmanian indigenous people, European exploration, of whaling, scallop fisheries, fish farming and is now the home of contemporary artist Caroline McGregor. From her windows she sees the approach of rough weather and the moonlight metallic on gunmetal water. Her vision is that of an artist embracing the minimal through precursors such as Mark Rothko and Barnett Newman. With human existence delineated in horizontals and verticals she reduces the visual noise to tonal poems through a process of layering and erasure. The remainder is softly dramatic, evoking the darkest of J M W Turner's works and the epic vistas of Caspar David Friedrich. This is an exhibition that elicits feeling at the deepest level, needing no explanation, just an immersion into the subtle portentous beauty of the light under the moon (Nocte Luna).

Betty Nolan

CAROLINE MCGREGOR



Nocte Luna

Nocte Luna 1
Oil on Linen
101 x 76cm
\$2500

The d'Entrecasteaux Channel
by the light of the moon
October 2023



Nolan
GALLERY

THE NOCTE LUNA SUITE



II



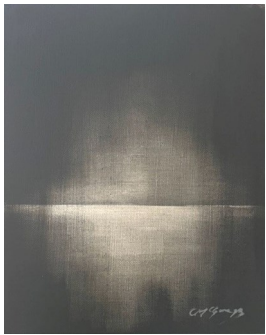
III



IV

II, and IV
50 x 39
oil on linen
57 x 77 framed
\$1600

III
50 x 39
oil on linen
Framed 72 x 83
\$1800



V



VI



VII

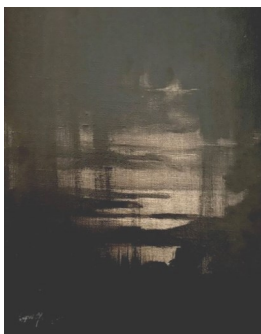


VIII

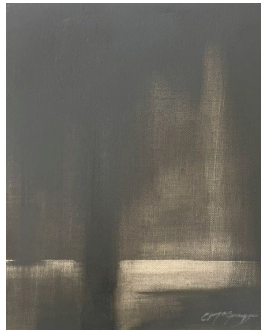


IX

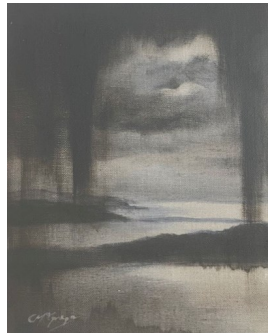
20 x 25 oil on linen
35 x 42 framed
\$550



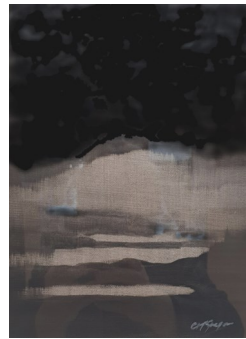
X



XI



XII



XVI

25 x 20 oil on linen
42 x 35 framed
\$550



XIII



XIV

17 x 12.5 oil on linen
32 x 27 framed
\$415