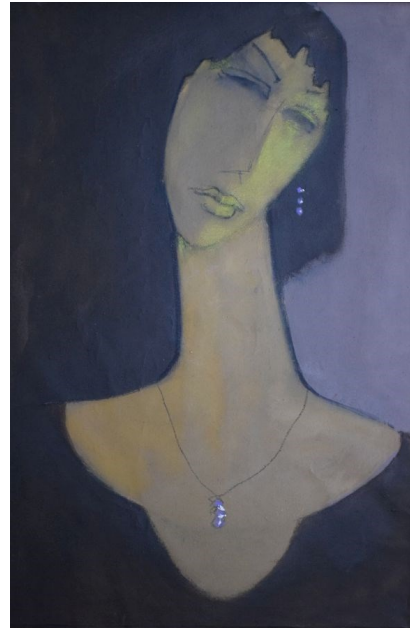
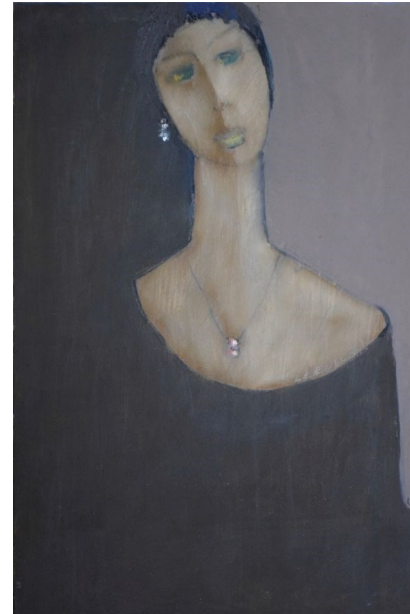


*Greta*  
Oil painting on canvas,  
101 x 76 cm  
\$4,500



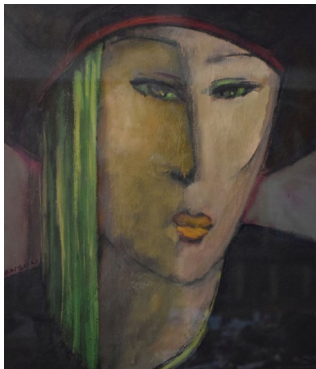
*Juliette*  
Oil painting on canvas,  
92 x 61 cm  
\$4,500



*Amedeo's Sister*  
Oil painting on canvas,  
90 x 60 cm  
\$4,000



*Woman smoking*  
Oil painting on canvas,  
75 x 60 cm  
\$3,750



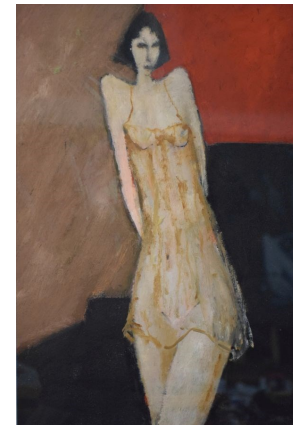
*Roxanne*  
Oil painting on canvas  
under glass, 54 x 46 cm  
\$3,250



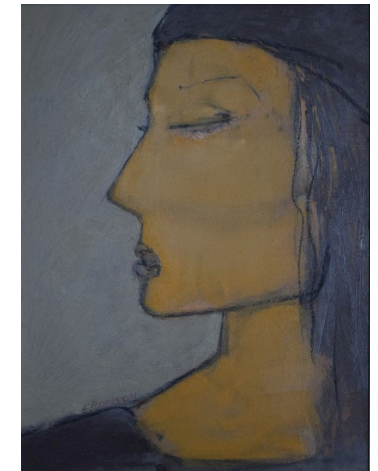
*Woman in red*  
Oil painting on canvas,  
60 x 60 cm  
\$3,000



*Spanish woman*  
Oil painting on canvas  
under glass, 62 x 50 cm  
\$3,500



*Woman in Negligee*  
Oil painting on canvas  
under glass, 62 x 42 cm  
\$3,500

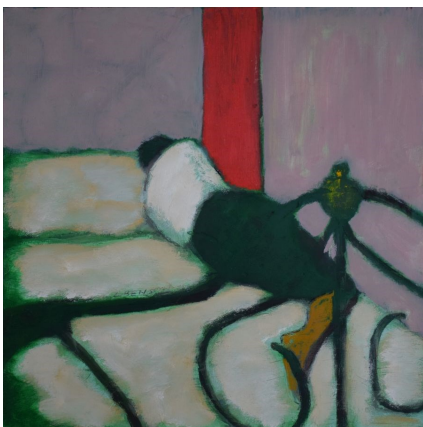


*Profile*  
Oil painting on canvas, 69  
x 53 cm  
\$2,000

## FEMME

Leonard Benson is one of Tasmania's grand painters. Through the faces of the women he depicts Leonard Benson's Modernist works tell a tale of loves won and lost. With complex sophisticated colour we see features drawn with an elegant line that removes unnecessary detail, allowing the bright smear of a hastily applied lipstick to counterpoint brimming eyes. The chalky oils are mixed into complex greys to background intense saturated colour. Surfaces are thickly textured showing the painting technique of a process based painter who adds layers until the work is done. Like a balanced equation there is a real satisfaction in the pictorial symmetry of each composition where the thickened line or the red strip pulls it all together in an audacious fashion. Leonard Benson was a draughtman with the public service before he studied painting with Danish artist Kurt Olssen. The influence of Amedeo Modigliani is clear from the elongated forms but we can also see the social realism of Noel Counihan, the reductionism of Piet Mondrian and the faceted angularity of John Brack. All these formal antecedents are secondary to Leonard's own vision however as a documenter of love, its perils and joys, its beauties and loss.

Betty Nolan



*Woman with the blues*  
Oil painting on canvas, 76 x 76 cm  
\$3,500



*The Screw*  
Oil painting on canvas framed  
under glass, 50 x 39 cm  
\$2,500

## FEMME Leonard Benson

Nolan



*Blue woman*  
Oil painting on canvas,  
60 x 60 cm  
\$2,750

**Nolan Gallery**  
Space 109, 77 Salamanca Place, Battery Point 7004  
Ph:(03)62233449, M:0438446785  
E:betty@nolanart.com.au, I: www.nolanart.com.au

