



Bridgewater

Oil painting on canvas,
100 x 105 cm, \$6,600



Storm off Hells Gates

Oil painting on canvas,
80 x 120 cm, \$5,900



Cradle - Wedgetail

Oil painting on canvas,
75 x 100 cm, \$4,900



Storm Hells Gates-Study

Oil painting on canvas,
50 x 50 cm, \$1,800



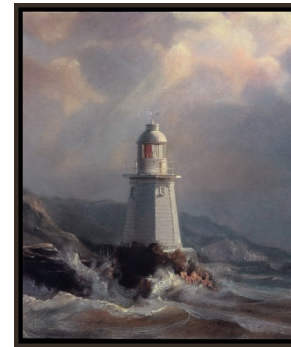
Breaking Wave

Oil painting on canvas,
60 x 60 cm, \$2,600



Source of the Meander

Oil painting on canvas,
60 x 90 cm, \$3,750



Benign Weather

Oil painting on canvas,
65 x 56 cm, \$2,600



Coastal - Bruny

Oil painting on canvas,
75 x 100 cm, \$4,900



Pine Tree Lake-Study

Oil painting on canvas,
40 x 40 cm, \$1,400



Cradle - Study

Oil painting on canvas,
50 x 50 cm, \$1,800



Mersey Bluff

Oil painting on canvas,
50 x 75 cm, \$2,600



Overlander

Oil painting on canvas,
50 x 75 cm, \$2,600



Storm off Bruny

Oil painting on canvas,
50 x 75 cm, \$2,600

TRAVERSING THE ISLAND

Keith Lane is a grand oil painter using the conventions of neo Romantic landscape painting to express his affection for the history and topography of his home. Originally from London Keith Lane is steeped in the traditions of JMW Turner and John Martin, painters of humanity on the edge, both literally and figuratively. The end of war, the dangerous beauty of Nature and human beings under threat are his themes.

In a previous exhibition Lane has considered the contemporary Antipodean threat of bushfire (*Phoenix Rising* 2020) but always with an underpinning of hope. 2023 exhibition *Light* further developed the theme using the metaphor of lighthouses and in this visual journey the lighthouses re-emerge from the unforgiving coast of Tasmania.

There is much more however in this suite of sublime landscapes. There are ancient forests unchanged for millenia and exquisite dawn lit mountain peaks with raptors hunting above. The bushwalker on the overland trail is kitted out in the best of modern gear but the landscape is the same traversed by the original inhabitants for many thousands of years. Painter William Piquenit over a century ago hiked into the peaks and made monochrome plein air studies.

Today Keith Lane formalizes in paint the remarkable island that brings countless people from crowded cities to Tasmania to view the wilderness and taste the elemental.

Nolan

TRAVERSING THE ISLAND

Keith Lane



Pine Tree Lake
Oil painting on canvas,
60 x 90 cm
\$3,750

Betty Nolan



Blood Moon
Oil painting on canvas,
25x 37 cm, \$1,300



Sunrise-Cradle
Oil painting on canvas,
25x 37 cm, \$1,300

Nolan Gallery

Space 109, 77 Salamanca Place, Battery Point 7004
Ph:(03)62233449, M:0438446785
E:betty@nolanart.com.au, I: www.nolanart.com.au

