



Untethered
Acrylic on canvas,
60 x 90 cm
\$1,550



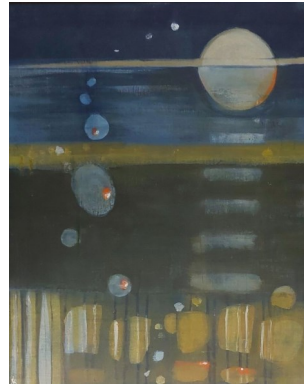
Over The Hill
Acrylic on timber panel
30 x 30cm
\$450



No Time To Be Timid
Acrylic on timber panel,
70 x 60 cm
\$1075



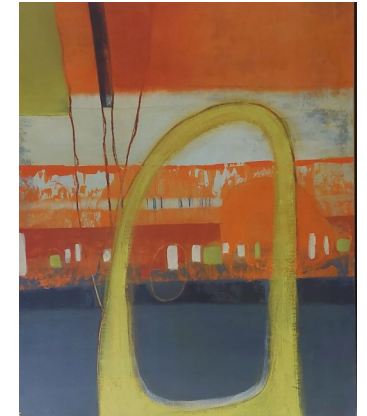
Balloons At Midnight
Acrylic on canvas,
60 x 50 cm
\$950



Moondancing
Acrylic on canvas,
60 x 50 cm
\$950



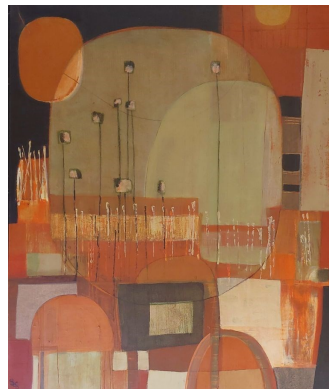
Sail Away
Acrylic on timber panel
30 x 30cm
\$450



Through A Different Lens
Acrylic on canvas,
60 x 50 cm, (fr)
\$950



*Leylines and
Throughlines*
Acrylic on timber panel
70 x 60 cm \$1075



Listening To The Land
Acrylic on timber panel,
60 x 50 cm \$950



Greener Pastures
Acrylic on timber panel
30 x 30cm
\$450

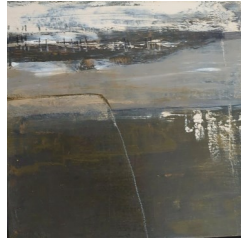
Nolan



Neutral territory #1



Neutral territory #2



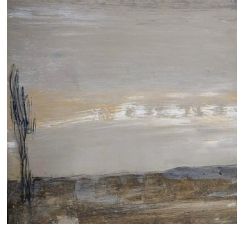
Neutral territory #3



Neutral territory #4



Neutral territory #5



Neutral territory #6

Neutral Territory 1 –6
20cm x 20cm
Acrylic on timber
panel, framed
@ \$315



Moon Over The Bay
Acrylic on Canvas, fr
\$525



Low Tide
Acrylic on Canvas, fr
\$525



Sunmoon Bay
Acrylic on Canvas, fr
\$525



Rain On The Mudflats
Acrylic on Canvas, fr
\$525

MADE ON BRUNY Sarah L Stewart



Untethered

In her third solo exhibition with Nolan Gallery Sarah L Stewart explores the abstract possibilities of a diverse Southern island landscape. From mudflats to the hilly interior Bruny is depicted through the lens of the artists experience, whether bright optimism or subdued melancholy. Romance after dark lives beside untethered thoughts as the painter describes life changes through pictorial means. Influenced by Paul Klee, Ian Fairweather and Edvard Munch, Sarah Stewart brings her unique abstract vision to Bruny Island.

Betty Nolan

Nolan Gallery

Space 109, 77 Salamanca Place, Battery Point 7004
Ph:(03)62233449, M:0438446785
E:betty@nolanart.com.au, I: www.nolanart.com.au

SAC

